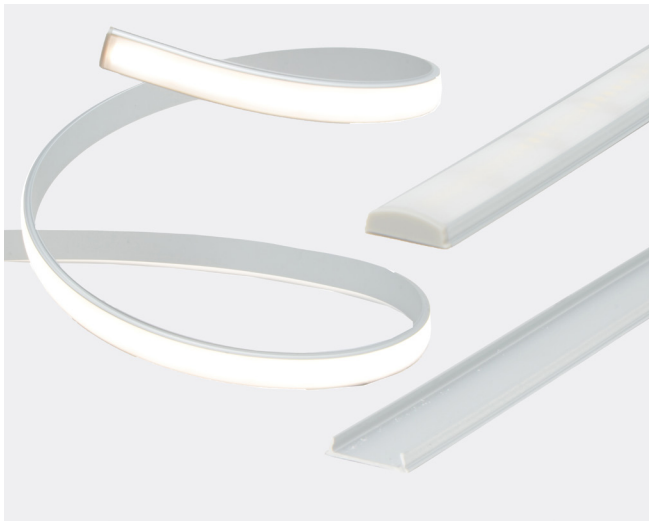


## PRODUCT OVERVIEW



A new decorative solution for those looking to really customize their lighting, our **bendable** Aluminum Profile "S11" is here. Made of premium alloy, Aluminum Profile "S11" allows one to bend the Aluminum Channel into different shapes in order to achieve a custom light design, all while protecting the LED strips from the elements while dissipating their heat. Aluminum Profile "S11" can accommodate any LED Strip up to 0.52" (13mm) wide. Use our profile "S11" to create **abstract** designs, or integrate it into existing structures to add a modern touch. Aluminum Profile "S11" is conveniently sold in **8ft lengths** as a completed kit including a pair of endcaps, and one premium polycarbonate, UV-resistant **frosted lens**.

### Features

- Slim, low-profile design, for discreet linear LED lighting applications.
- Easily concealable.
- New! Bendable profile for custom design.
- Increases Lifetime of any LED Strip through heat dissipation.
- Fast, headache-free clip mounting system.
- Protects LED Strips from damaging elements.
- Reliable Aluminum Housing for LEDs.

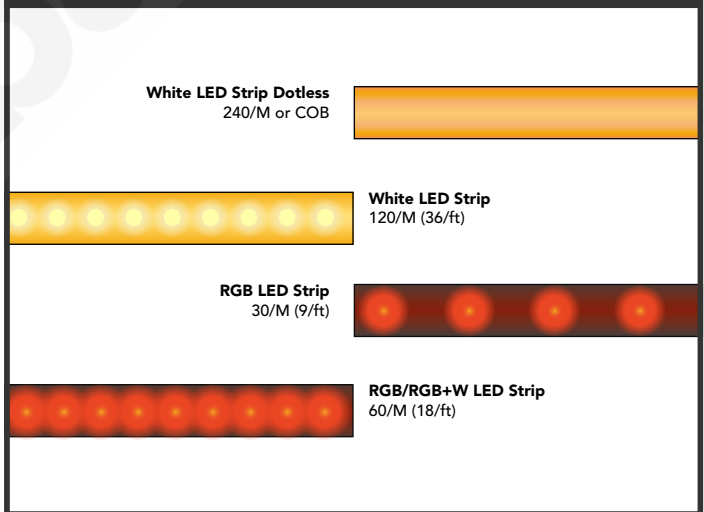
### Specifications

Part#	ALUMS11-78
Length	8ft (94" for free shipping)
Width	0.71" (18.1mm)
Height	0.21" (5.3mm)
Lens Type	Frosted
MAX Light	3 Watts/ft (recommended)
MAX Strip Size	0.52" (13mm)

### Dimensions



### Dots



### Mounting Options

